

MONTHLY MEMBERSHIP PROGRESS REPORT

District 322 B2

Results as of: 10/31/2023

GMT:

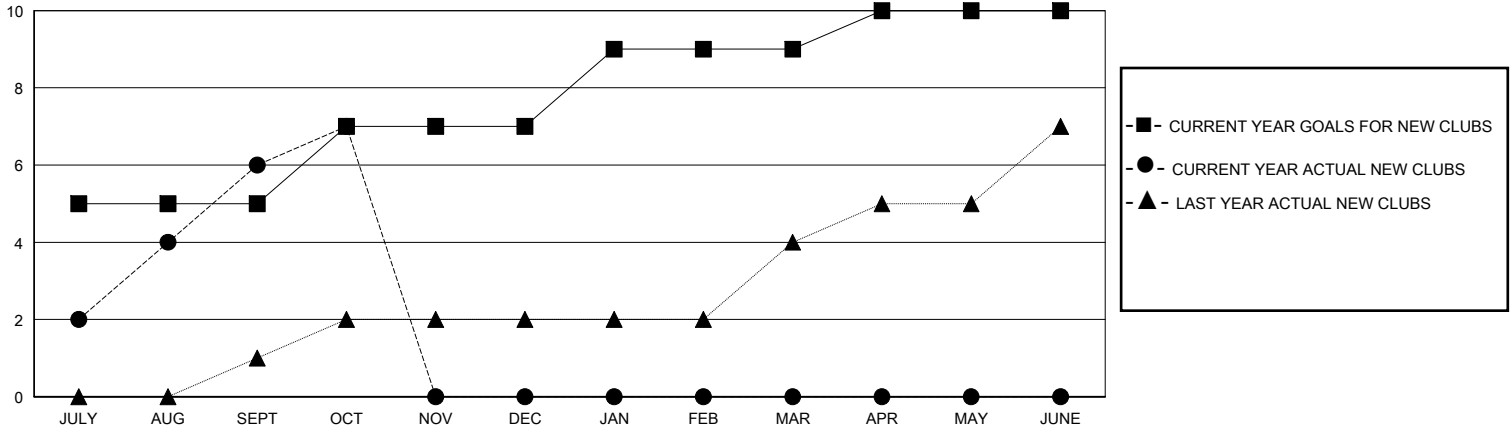
LOCATION INDIA

GMT CA

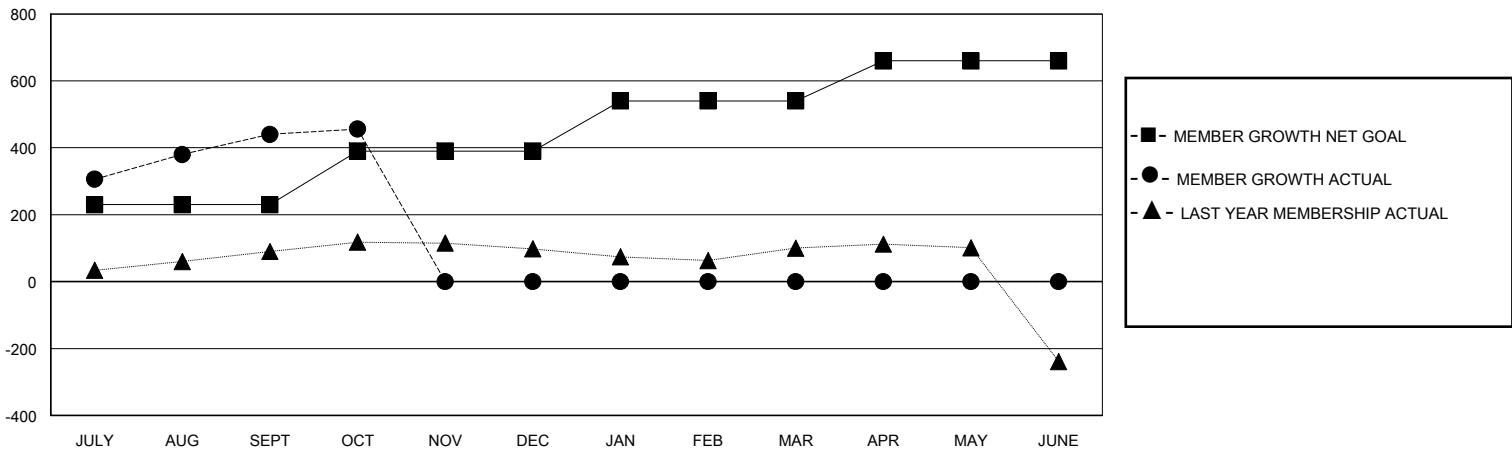
Clubs			
RESULTS FOR 2023-2024			
QUARTER	NEW CLUB GOAL	NEW CLUBS	DROPPED CLUBS
JULY/AUG/SEPT	5	6	1
OCT/NOV/DEC	2	1	0
JAN/FEB/MAR	2	0	0
APR/MAY/JUNE	1	0	0

Members			
RESULTS FOR 2023-2024			
QUARTER	MEMBER GROWTH NET GOAL	MEMBER GROWTH ACTUAL	DROPPED MEMBERS ACTUAL (including transfers)
JULY/AUG/SEPT	230	508	59
OCT/NOV/DEC	160	27	11
JAN/FEB/MAR	150	0	0
APR/MAY/JUNE	120	0	0

GOALS AND ACTUAL NEW CLUBS CUMULATIVE



GOALS AND ACTUAL MEMBERS CUMULATIVE



DROPPED CLUBS: 1	55 CLUBS OF 83 ADDED 1 OR MORE NEW MEMBERS	<u>GENDER DISTRIBUTION</u>	
		MALE	2,235 (70.42%)
		FEMALE	939 (29.58%)
<u>DROPPED MEMBERS</u>		TOTAL FAMILY UNIT MEMBERS 1,505	
DECEASED	7	FAMILY MEMBERS PAYING HALF DUES 932	
CLUB CANCELLED	0		
OTHER	63		
TOTAL	70		

[CLICK HERE FOR CUMULATIVE MEMBERSHIP DATA](#)